

INTERNO



*IN CONTINUA EVOLUZIONE
THE EVOLUTION CONTINUES*

ABK

EMOZIONI IN SUPERFICIE

INTERNO 9

*IN CONTINUA EVOLUZIONE
THE EVOLUTION CONTINUES*

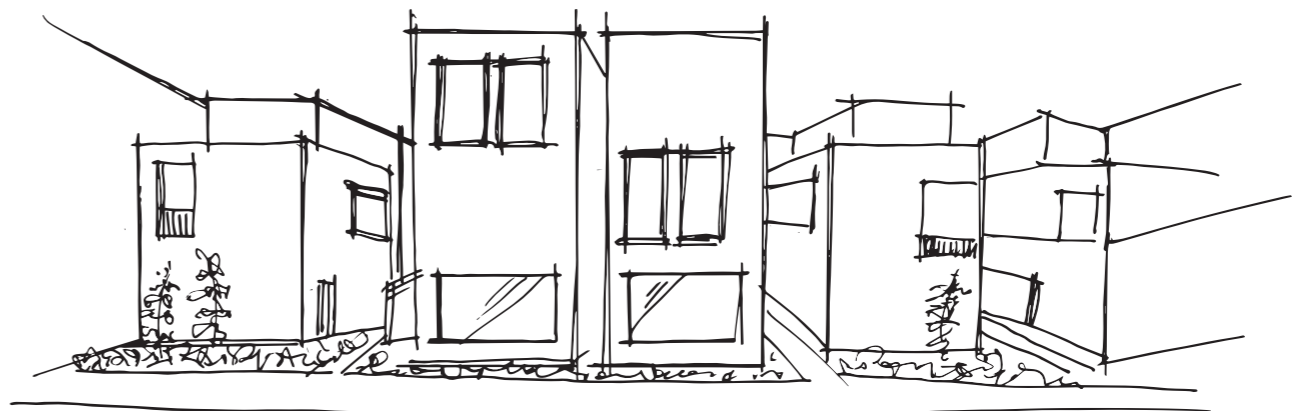
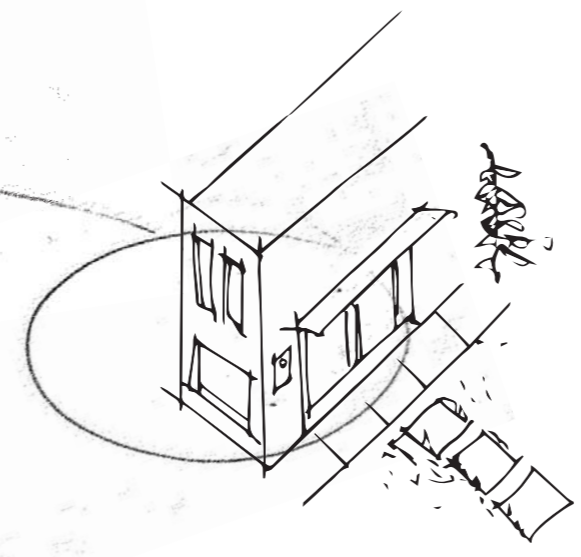
ABK
EMOZIONI IN SUPERFICIE



INTERNO 9

Immagina un complesso architettonico con uno stile moderno, minimalista, dove lo sguardo incontra strutture lineari, armonie di volumi, contrasti materici, anche su grandi superfici. L'eleganza della semplicità si amalgama all'irriverenza indomita del metallo che, con affascinante rudezza, si fa protagonista del paesaggio.

Imagine a contemporary residential complex with a minimalist feel, where the viewer's gaze is drawn to linear structures, harmonious forms, and contrasting textures. Stylish simplicity is paired with the untamed irreverence of weathering steel, which - with a stunning coarseness - becomes a key feature of the landscape.



INTERNO 9



MATCHING MATERIALS

Attraverso le molteplici ispirazioni offerte dalla gamma ABK, è possibile personalizzare ogni ambiente donandogli una sensazione materica sempre differente.

Metallo, pietra, marmo e legno si combinano sapientemente tra loro, dando vita a sorprendenti contaminazioni stilistiche per architetture estremamente contemporanee.

The many inspirations behind the ABK range can be used to customise any space and create constantly changing material effects.

Metal, stone, marble and wood are skilfully combined to create a surprising crossover style ideal for highly contemporary architectural solutions.



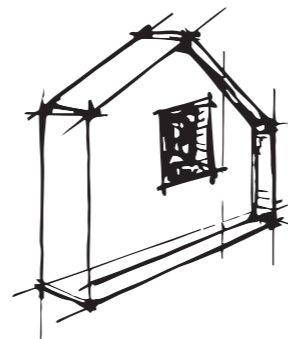
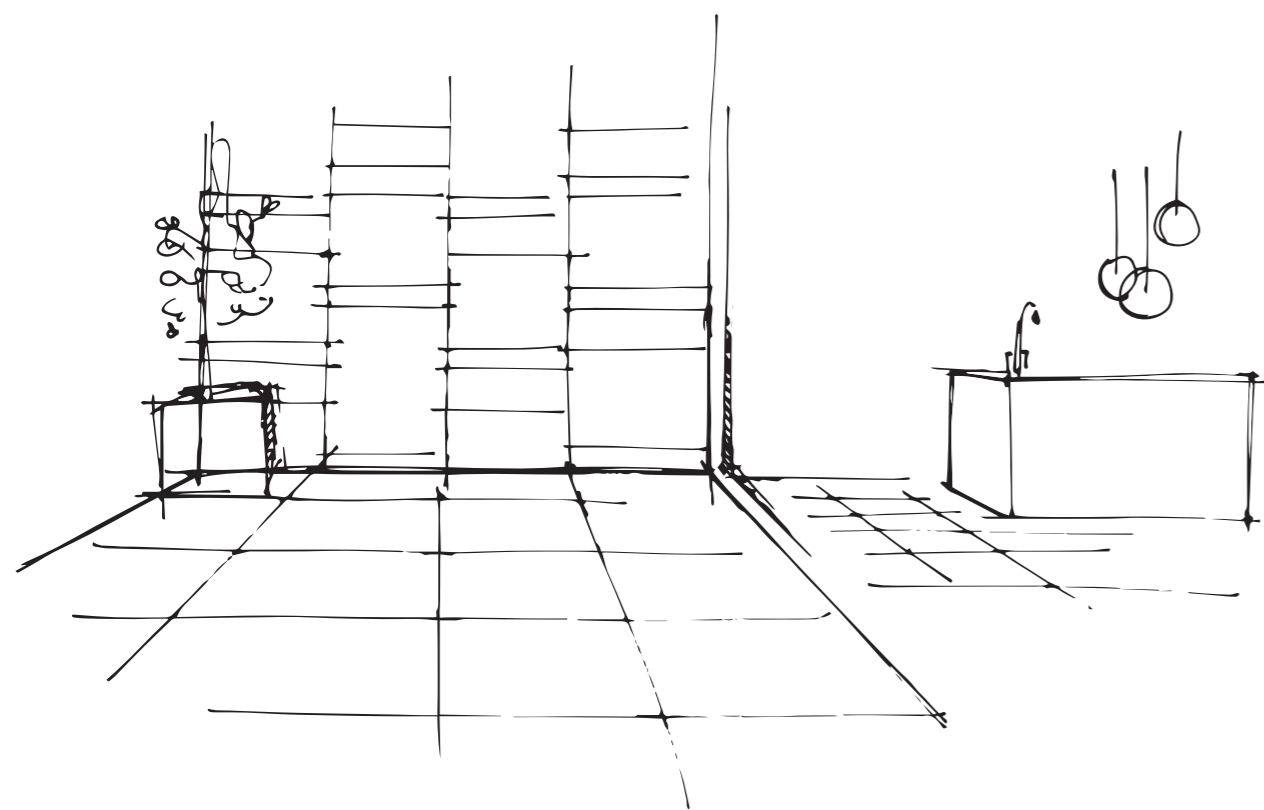
METAL
+
STONE



METAL
+
MARBLE



METAL
+
WOOD



Parete esterna abitazione:
gioco di formati con lastre
effetto ossidato di diverse dimensioni.
Allineare ceramica con superficie
pietra a pavimento
Pianta fiorita in vaso

External walls, home: design featuring
a combination of different-sized
rust-effect slabs/
Team ceramic slabs with stone paving
Flowering plant in pot

RUST



Outdoor: Interno 9 Rust 60x120 - Rust Mix Sizes 60x120
Indoor: Interno 9 Mosaico Losanga Rust 30x60 - Rust Lapp. 60x120 / 60x60



Interno 9 Rust 160x320 rett. - Native Ash 120x120 rett.



Interno 9 Rust rett. 120x280, 60x120 - Ghost Ivory 120x280 rett.

Interno 9 Rust rett. 120x280, 60x120 - Abkstone Diamond Ivory Lux 12 MM



Sensi Roma Cream nat. rett. 60x120 - Interno 9 Rust nat. rett. 60x120

Poetry Stone Carving Ecrú 60x120 - Poetry Stone Pirenei Ecrú R11 60x120 8,5 mm - Interno 9 Rust 120x280



Interno 9 Rust nat. rett. 120x280, 60x120 - Sensi 900 Precious Black Ant. 3D rett. 60x120



Sensi Gems Crystal 60x120 rett. - Crystal mix sizes 30x60 rett./lux - Atlantis List. Senape 5x60
Interno 9 Rust 60x120 rett. - Sensi Gems Crystal 120x280 Soft - Sensi Gems Crystal 60x120 rett.

Interno 9 Rust 120x280, 60x120
Wide&Style Mini Caribbean 60x120



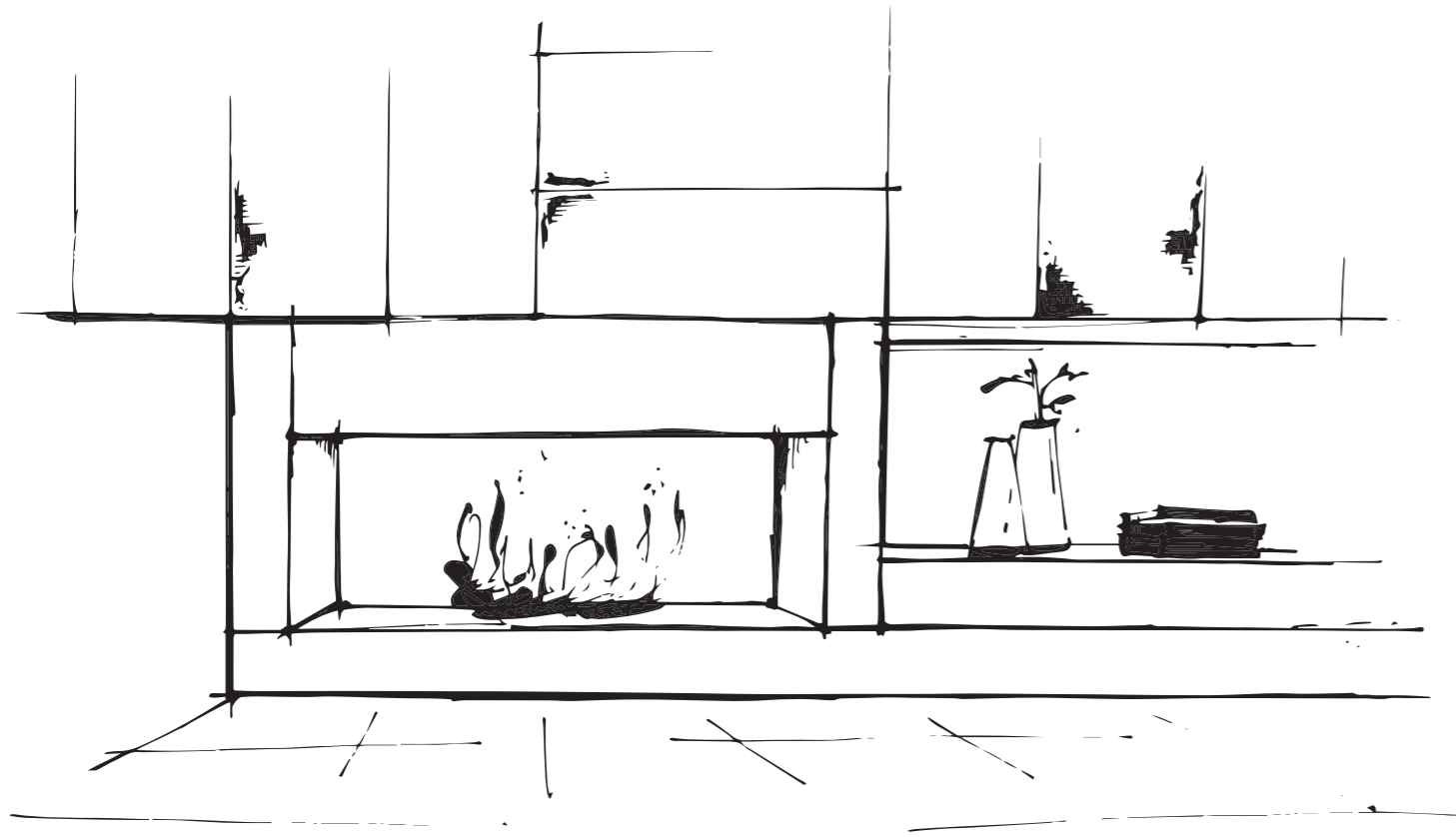
Interno 9 Rust 120x280
Eco Chic Naturale 20x120
Bath Design-Washbasin: Calacatta Oro Fullvein 3D Lux 20 mm



Wide&Style Rainbow Salvia 120x280 - Blend Concrete Iron 120x120
Interno 9 Rust 160x320



DUNE



Toni caldi e chiari per il pavimento
del living, in contrasto con gli
arredi scuri e la struttura camino
Prevedere base in marmo per
il camino

Warm, pale tones for the living room floor
provide a stylish contrast with the dark
furnishings and the fireplace feature
Include marble hearth



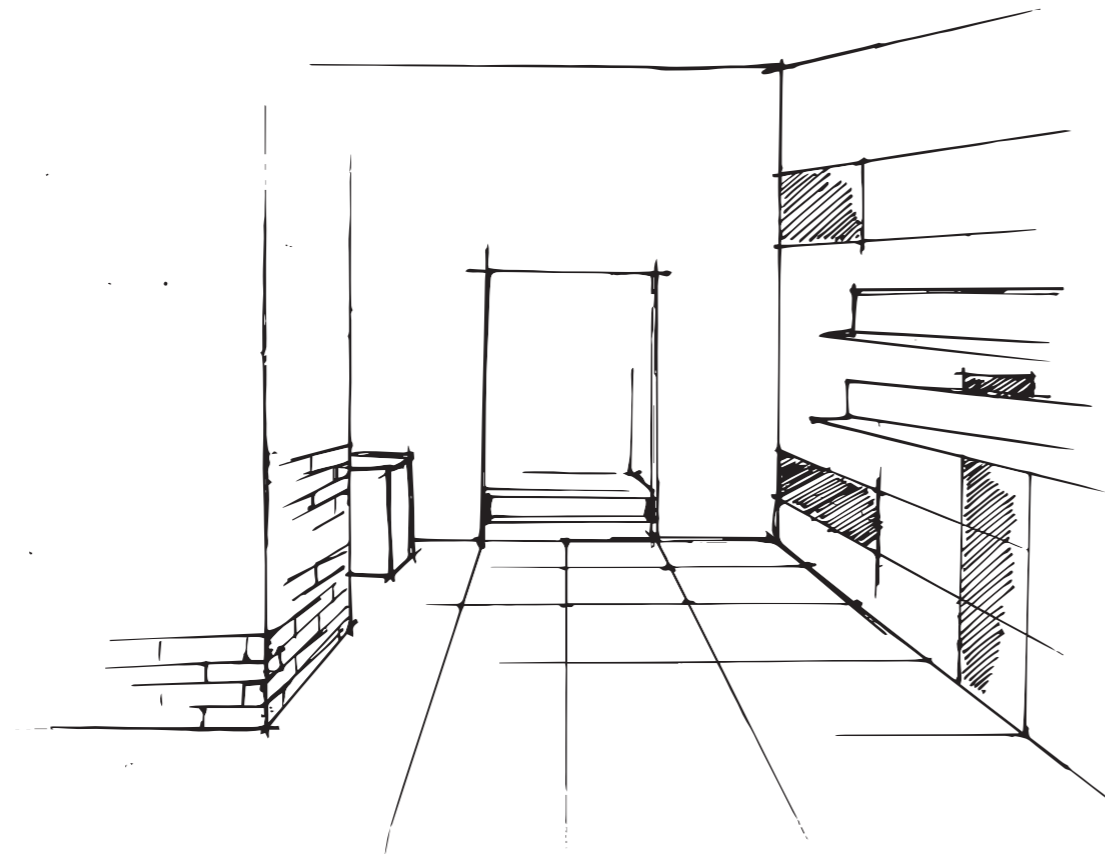


MUD



Per showroom, al 1° piano utilizzare lastre
effetto corten nero a pavimento e parete
muretto 3D
Parete espositiva: posa multiformato
d'effetto con stecche lastre in colorazioni più calde
Posa marmo ceramico nella parete scala
e nella parete espositiva
Mensole ad L in metallo color ottone
retroilluminato

For the showroom, on the first floor,
use black weathering steel-effect slabs on the floor
and 3D dwarf wall effect on the walls
Display wall: high-impact multi-site
design with the same slabs in warmer tones
Fit ceramic marble tiles on the walls of the
stairway and on the display wall
Brass-coloured metal L-shaped shelves
with back-lighting

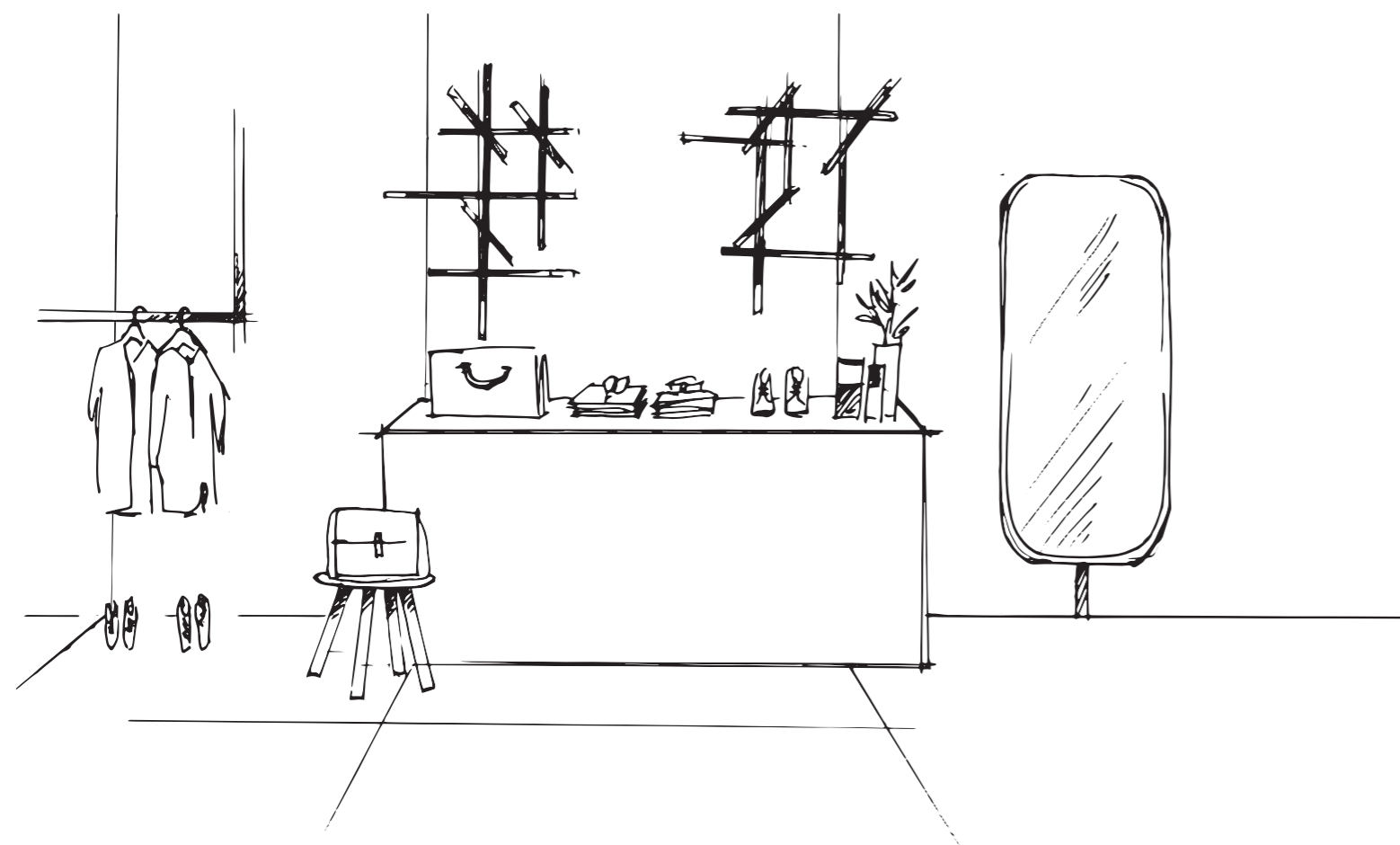




Interno 9 Mud rett. 60x120



DARK



Interno 9 Dark rett. 120x120



Interno 9 Dark rett. 60x120 - Mud Lapp. rett. 60x120

Interno 9 Dark rett. 60x120 - Gradone Top Dark rett. - Sensi Calacatta Select Sablè rett. 60x120



Interno 9 Mud rett. 60x120 - Interno 9 Dark rett. 60x120 - Mix Sizes rett. 60x120 - Sensi Calacatta Select Sablè rett. 60x120 - Do Up Street Black 60x120

PEARL

Elemento soffocato molto luminoso
Permette con poca spesa
formare quadrato 120 x 120
vestimento chiaro

Element bright living room
regular living floor
square size 120 x 120
light color wall

Consolle nera
dark console
lampadario prototipo
main chandelier





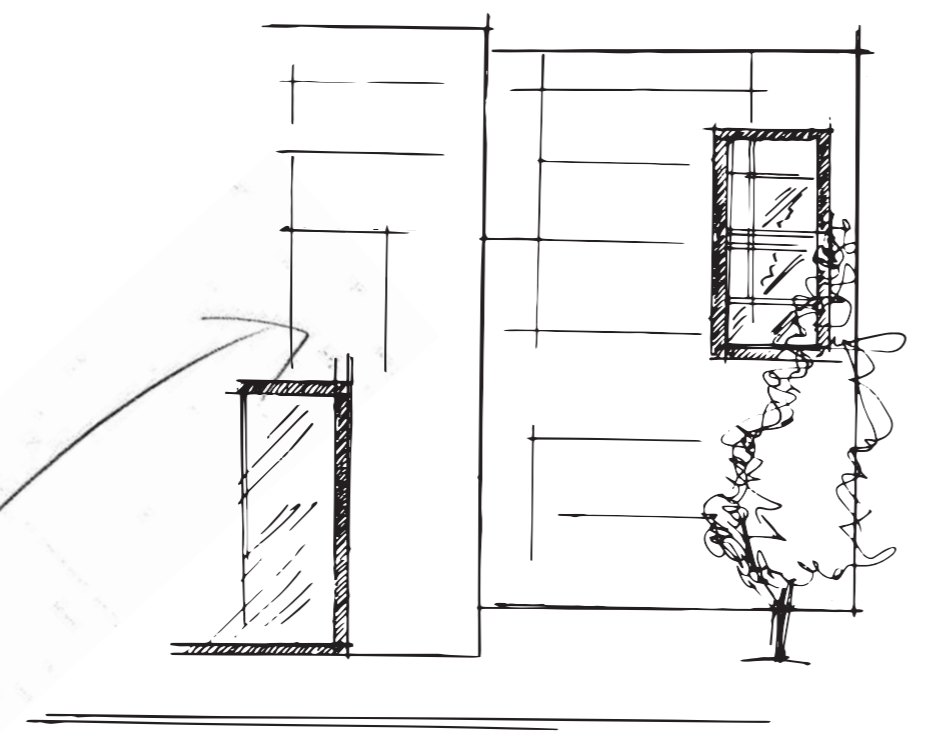
Interno 9 Pearl rett. 30x120 - Fascia Essenze mix 5x30



Indoor: interno 9 Pearl rett. 30x120
Outdoor: Dolphin Grey Aged rett. 20x120

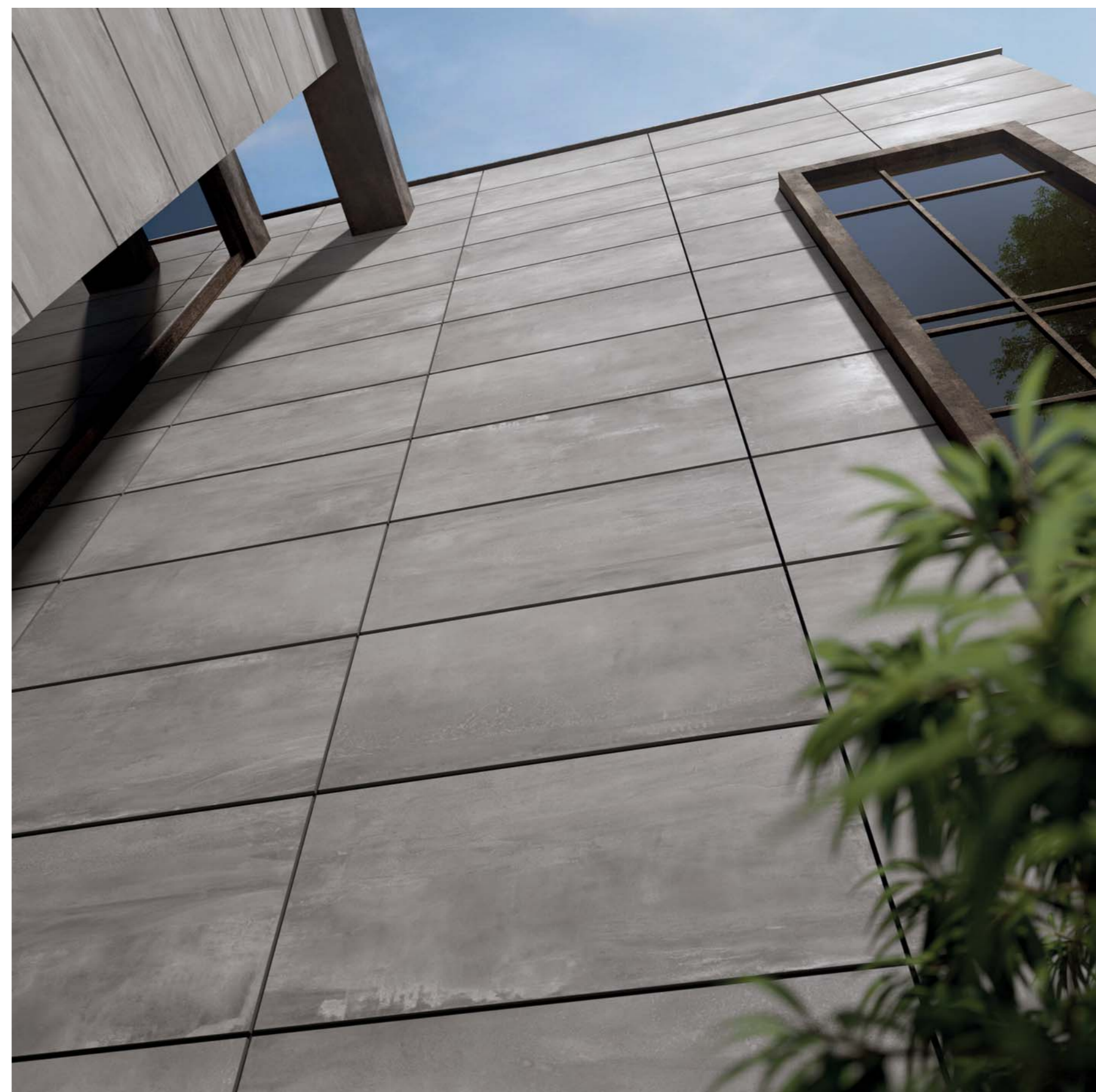


SILVER



facciate esterne
 minimale in colore Silver
~~facciate~~
 struttura finestra
 in metallo scuro

minimal external facade
 silver grey
 window with dark iron structure



Silver Lapp. rett. 60x120 - Dark rett. 60x120



Interno 9 Silver rett. 80x160 - 120x280 - Matita alluminio rame 0,5x120 - Crossroad Wood grey rett. 20x120



Interno 9 Silver rett. 30x120 - Fascia Raku Dark mix 2 30x120

Poetry Wood Mud 20x120 - Poetry Decor Metal Mud 20x20 - Interno 9 Silver 120x280 - Mosaico 30x30



INTERNO 9

COLOUR AND SIZE CHART

				
WIDE	RUST	DARK	SILVER	PEARL
6 mm				
160x320 64"x128" nat rett.	•	•	•	
120x280 48"x112" nat rett.	•	•	•	•
120x120 48"x48" nat rett.	•	•	•	•
80x160 32"x64" nat rett.	•	•	•	•
80x80 32"x32" nat rett.	•	•	•	•

						
	RUST	DARK	SILVER	PEARL	MUD	DUNE
8,5 mm						
60x120 24"x48" nat rett.	•	•	•	•	•	•
60x120 24"x48" lapp rett.	•	•	•	•	•	•
30x120 12"x48" nat rett.	•	•	•	•	•	•
30x120 12"x48" lapp rett.	•	•	•	•	•	•
60x60 24"x24" nat rett.	•	•	•	•	•	•
60x60 24"x24" lapp rett.	•	•	•	•	•	•
30x60 12"x24" nat rett.	•	•	•	•	•	•

INTERNO 9 WIDE

GRES PORCELLANATO A MASSA COLORATA
FULL BODY COLORED PORCELAIN

RUST

6 mm

160x320	nat rett.	0000299
120x280	nat rett.	0008649

8,5 mm

120x120	nat rett.	0000314
80x160	nat rett.	0000305
80x80	nat rett.	0000308

ABKSTONE

163,5x323 nat.	0000296	± 6 mm
163,5x323 nat.	0003779	± 12 mm



DARK

6 mm

160x320	nat rett.	0000300
120x280	nat rett.	0008650

8,5 mm

120x120	nat rett.	0000315
80x160	nat rett.	0000306
80x80	nat rett.	0000309

ABKSTONE

163,5x323 nat.	0000297	± 6 mm
163,5x323 nat.	0005319	± 12 mm



INTERNO 9 WIDE

GRES PORCELLANATO A MASSA COLORATA
FULL BODY COLORED PORCELAIN

SILVER

6 mm		
160x320	nat rett.	0000301
120x280	nat rett.	0008651
8,5 mm		
120x120	nat rett.	0000316
80x160	nat rett.	0000307
80x80	nat rett.	0000310

ABKSTONE









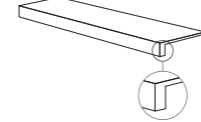



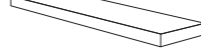

163,5x323 nat.	0000298	± 6 mm
163,5x323 nat.	0005320	± 12 mm



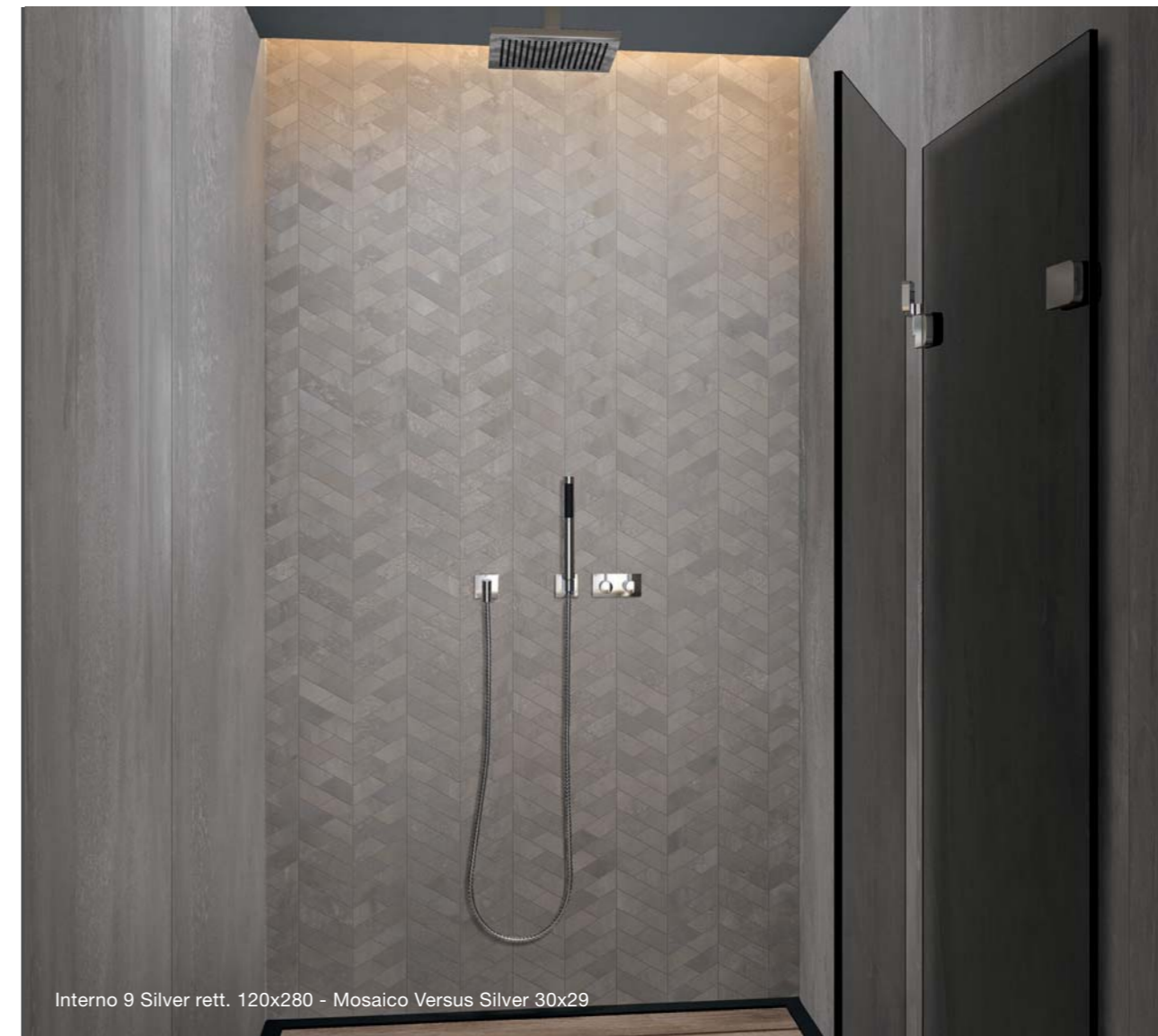
PEARL

6 mm		
120x280	nat rett.	0008269
8,5 mm		
120x120	nat rett.	0000630
80x160	nat rett.	0000627
80x80	nat rett.	0000628



DECORI / DECORATIVE 7 mm					
	MOS. VERSUS 30x29 	0000961	0000962	0000963	0000964
PEZZI SPECIALI / SPECIAL TRIMS 8,5 mm		RUST	DARK	SILVER	PEARL
	* BATTISCOPIA 5,5x80 	0000720	0000721	0000722	0000723
	GRADONE TOP rett. 32x120x4,5x2 	0000724	0000725	0000726	0000727
	ANGOLARE TOP SX 32x120x4,5x2 	0000763	0000764	0000765	0000766
	ANGOLARE TOP DX 32x120x4,5x2 	0000767	0000768	0000769	0000770

* Fino ad esaurimento scorte l' art. verrà consegnato a spessore 7 mm. The item will be delivered 7 mm thick until stocks are exhausted.



RUST

8,5 mm

60x120	nat rett.	I9R34300
60x120	lapp. rett.	I9L34300
30x120	nat rett.	I9R57300
30x120	lapp. rett.	I9L57300
60x60	nat rett.	I9R01300
60x60	lapp. rett.	I9L01300
30x60	nat rett.	I9R03300



MUD

8,5 mm

60x120	nat rett.	I9R34250
60x120	lapp. rett.	I9L34250
30x120	nat rett.	I9R57250
30x120	lapp. rett.	I9L57250
60x60	nat rett.	I9R01250
60x60	lapp. rett.	I9L01250
30x60	nat rett.	I9R03250



DUNE

8,5 mm

60x120	nat rett.	I9R34100
60x120	lapp. rett.	I9L34100
30x120	nat rett.	I9R57100
30x120	lapp. rett.	I9L57100
60x60	nat rett.	I9R01100
60x60	lapp. rett.	I9L01100
30x60	nat rett.	I9R03100



DARK

8,5 mm

60x120	nat rett.	I9R34200
60x120	lapp. rett.	I9L34200
30x120	nat rett.	I9R57200
30x120	lapp. rett.	I9L57200
60x60	nat rett.	I9R01200
60x60	lapp. rett.	I9L01200
30x60	nat rett.	I9R03200



INTERNO 9

GRES PORCELLANATO A MASSA COLORATA
FULL BODY COLORED PORCELAIN

SILVER

8,5 mm

60x120	nat rett.	I9R34150
60x120	lapp. rett.	I9L34150
30x120	nat rett.	I9R57150
30x120	lapp. rett.	I9L57150
60x60	nat rett.	I9R01150
60x60	lapp. rett.	I9L01150
30x60	nat rett.	I9R03150



PEARL

8,5 mm

60x120	nat rett.	I9R34050
60x120	lapp. rett.	I9L34050
30x120	nat rett.	I9R57050
30x120	lapp. rett.	I9L57050
60x60	nat rett.	I9R01050
60x60	lapp. rett.	I9L01050
30x60	nat rett.	I9R03050



DUO COLD

8,5 mm

* 60x60	nat rett.	I9R01160
---------	-----------	-----------------

* Articolo composto da pattern grafici diversi che non prevedono agganci tra loro e miscelati in modo casuale in fase di inscatolamento. Non si garantisce pertanto la presenza costante di tutti i soggetti all'interno delle confezioni.
This article comes in several different versions with unconnected patterns that are mixed randomly at the time of packaging. There is therefore no guarantee that all patterns will be present in any individual box.



Interno 9 Silver 60x120 rett. - Duo Cold 60x60 rett.



DECORI DA RIVESTIMENTO - WALL DECORS



DECORI DA RIVESTIMENTO E DA PAVIMENTO
WALL AND FLOOR DECORS



5x30 4
* FASCIA ESSENZE MIX
I9R03053
(Legno - Wood)



4x30 4
* FASCIA ARDESIA GRIGIO
RER09204
(Pietra naturale - Natural stone)



4x30 4
* FASCIA ARDESIA BRONZO
RER09054
(Pietra naturale - Natural stone)

* Art. realizzati con materiali naturali
Items produced with natural materials



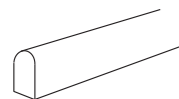
30x120 2
FASCIA RAKU DARK MIX 2
I9R57051 (prezzo al pz)
(Metalli preziosi - Precious metals)



19,5x8,5 4
LOSANGA RAKU MIX
I9R03052

MATITE ALLUMINIO - ALUMINIUM STRIPS

Articoli realizzati in alluminio anodizzato per l'uso a parete, adatti a raccordare piastrelle di diverso spessore (8,5/7/6 mm).
Anodized Aluminium strips for use between wall tiles of different thicknesses (8,5/7/6 mm).



MATITA ALLUMINIO 0,5x120 4
Parte superiore arrotondata / Rounded top.



MATITA ALLUMINIO
000086

Parte superiore arrotondata e colorata con resine acriliche.
Rounded top colored with acrylic resins.



MATITA ALLUM. ORO
0008535



MATITA ALLUM. RAME SCURO
0008534



MATITA ALLUM. WHITE
0000087



MATITA ALLUM. TERRACOTTA
0008530



MATITA ALLUM. BLU
0008532



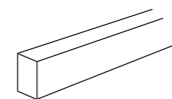
MATITA ALLUM. VERDE
0008531



MATITA ALLUM. ARDESIA
0008533



MATITA ALLUM. BLACK
0000088



MATITA ALLUMINIO 0,5x120 4
Parte superiore piatta colorata in bagno galvanico / Flat top colored in galvanic bath.



MATITA ALLUM. BRONZO
0000557



MATITA ALLUM. RAME
0000556



DECORI / DECORATIVE 8,5 mm	RUST	MUD	DUNE	DARK	SILVER	PEARL
MOS. LOSANGA rett. 30x60 4	I9R03301	I9R03251	I9R03101	I9R03201	I9R03151	I9R03051
MOS. QUADRETTI rett. 30x30 4	I9R09301	I9R09251	I9R09101	I9R09201	I9R09151	I9R09051
MIX SIZES 60x120 2	I9R34310	I9R34260	I9R34110	I9R34210	I9R34160	I9R34060
Pcs box: 30x120 2 20x120 2 10x120 2						

PEZZI SPECIALI / SPECIAL TRIMS 8,5 mm	RUST	MUD	DUNE	DARK	SILVER	PEARL
BATTISCOPA rett. 5,5x60 10	I9R01302	I9R01252	I9R01102	I9R01202	I9R01152	I9R01052
GRADONE TOP rett. 32x120x4,5x2 1	I9R34301	I9R34251	I9R34101	I9R34201	I9R34151	I9R34051
ANGOLARE TOP SX 32x120x4,5x2 1	I9R34302	I9R34252	I9R34102	I9R34202	I9R34152	I9R34052
ANGOLARE TOP DX 32x120x4,5x2 1	I9R34303	I9R34253	I9R34103	I9R34203	I9R34153	I9R34053


CARATTERISTICHE TECNICHE TECHNICAL FEATURES

CLASSIFICAZIONE SECONDO NORME UNI EN 14411 (ISO 13006) ALLEGATO G-Gruppo Bla GL
CLASSIFICATION IN ACCORDANCE WITH UNI EN 14411 (ISO 13006) ANNEX G-Group Bla GL

GRES PORCELLANATO A MASSA COLORATA / FULL BODY COLORED PORCELAIN

PROPRIETÀ FISICO-CHEMICHE PHYSICAL-CHEMICAL PROPERTIES	NORMA NORM	VALORE PRESCRITTO DALLE NORME VALUE PRESCRIBED FROM THE NORMS	* VALORE ABK ABK VALUE INTERNO 9 NAT.
LUNGHEZZA E LARGHEZZA DIMENSIONE MEDIA DI OGNI PIASTRELLA LENGTH AND WIDTH OF THE AVERAGE-SIZES TILE	UNI EN ISO 10545/2	± 0,6%	CONFORME ACCORDING TO
SPESORE THICKNESS	UNI EN ISO 10545/2	± 5%	CONFORME ACCORDING TO
RETTILINEARITÀ SPIGOLI WARPAGES OF EDGES	UNI EN ISO 10545/2	± 0,5%	CONFORME ACCORDING TO
ORTOGONALITÀ WEDGING	UNI EN ISO 10545/2	± 0,6%	CONFORME ACCORDING TO
PLANARITÀ FLATNESS	UNI EN ISO 10545/2	± 0,5%	CONFORME ACCORDING TO
ASSORBIMENTO D'ACQUA WATER ABSORPTION	UNI EN ISO 10545/3	E ≤ 0,5%	CONFORME ACCORDING TO
RESISTENZA ALLA FLESSIONE BENDING STRENGTH	UNI EN ISO 10545/4	≥ 35 N/mm ²	CONFORME ACCORDING TO
FORZA DI ROTTURA BREAKING STRENGTH	UNI EN ISO 10545/4	Thickness ≥ 7,5 mm: Min 1300 N Thickness < 7,5 mm: Min 700 N	CONFORME ACCORDING TO
RESISTENZA ALL'ABRASIONE SUPERFICIALE PER PIASTRELLE SMALTATE ABRASION RESISTANCE FOR GLAZED TILES	UNI EN ISO 10545/7	DICHIARATO DALL'AZIENDA PRODUTTRICE DECLARED BY THE MANUFACTURING COMPANY	IN FUNZIONE DELLA DESTINAZIONE D'USO ACCORDING TO THE DESTINATION OF FINAL USE
RESISTENZA AGLI SBALZI TERMICI THERMAL SHOCK RESISTANCE	UNI EN ISO 10545/9	RICHIESTA REQUIRED	RESISTE RESISTS
RESISTENZA AL GELO FROST RESISTANCE	UNI EN ISO 10545/12	RICHIESTA REQUIRED	INGELIVO FROST PROOF
RESISTENZA ALL'ATTACCO CHIMICO CHEMICAL RESISTANCE	UNI EN ISO 10545/13	MIN GB	CONFORME ACCORDING TO
RESISTENZA ALLE MACCHIE RESISTANCE TO STAINING	UNI EN ISO 10545/14	GL ≥ MINIMO CLASSE 3	CONFORME ACCORDING TO
RESISTENZA ALLO SCIVOLAMENTO SLIP RESISTANCE	B.C.R.A. C.A.	μ 0,19 SCIVOLOSITÀ PERICOLOSA - DANGEROUSLY SLIPPERY 0,20 < μ < 0,39 SCIVOLOSITÀ ECCESSIVA - EXCESSIVELY SLIPPERY	> 0,40
	B.C.R.A. G.B.	0,40 < μ < 0,74 ATTRITO SODDISFACENTE - SATISFACTORY GRIP μ 0,75 ATTRITO ECCELLENTE - EXCELLENT GRIP	> 0,40
	ASTM C 1028 (S.C.O.F.)	SUP RESISTANT (> 0,60)	> 0,60 DRY > 0,60 WET
	DIN 51130	IN FUNZIONE DELL'AMBIENTE O DELLA ZONA DI LAVORO BASING ON THE ENVIRONMENT OR THE WORKING AREA	R10
	DIN 51097	-	A+B
	ANSI A 137-1:2012	≥ 0,42	> 0,42

* Valori medi di produzione / Average production values

VARIAZIONE CROMATICA SHADE VARIATION	V3	 V1	 V2	 V3	 V4
---	----	--	--	---	--

IMBALLI/PACKAGING

F.to nominale Nominal size	Finitura Finish	Spessore Thickness	F.to reale (mm) Work size (mm)	Imballo Packing	Pz/Scat. Pcs/Box	Mq/Scat. Sqm/Box	Kg/Scat. Kg/Box	Scat./Imb. Box/Pack.	Pz Totali Pcs Total	Mq totali Sqm total	Kg Imb. Kg Packing	Kg Totali Kg Total
160x320 64"x128"	rett	6	1596,5x3195	Cassa Crate	-	-	-	-	15	76,80	139	1.294
				Cavalletto container Container Rack pallet	-	-	-	-	36	184,32	180	2.952
120x280 48"x112"	rett	6	1194x2800	Cassa Crate	-	-	-	-	20	67,20	95	1.104
				Cavalletto Rack pallet	-	-	-	-	36	121,00	120	1.935
				Cavalletto container Container Rack pallet	-	-	-	-	36	121,00	140	1.955
80x160 32"x64"	rett.	8,5	797,25x1596,5	Cavalletto Rack pallet	2	2,56	51,20	22	44	56,32	70	1.196
				Pallet con sponde Pallet with sides	2	2,56	51,20	22	44	56,32	40	1.166
120x120 48"x48"	rett.	8,5	1194x1194	Pallet con sponde Pallet with sides	2	2,88	57,60	16	32	46,08	40	962
60x120 24"x48"	rett.	8,5	596x1194	pallet	2	1,44	28,80	30	60	43,20	20	884
60x120 mix sizes	rett.	8,5	596x1194	pallet	2	1,44	28,80	26	52	37,44	20	769
30x120 12"x48"	rett.	8,5	297x1194	pallet	4	1,44	28,80	36	144	51,84	20	1.057
80x80 32"x32"	rett.	8,5	797,25x797,25	pallet	2	1,28	25,60	48	96	61,44	20	1.249
60x60 24"x24"	rett.	8,5	596x596	pallet	3	1,08	21,60	40	120	43,20	20	884
30x60 12"x24"	rett.	8,5	297x596	pallet	6	1,08	21,60	40	240	43,20	20	884

L'unità minima di vendita per tutti gli articoli (fondi, decori e pezzi speciali) è la scatola completa. / The minimum sales quantity for all items (plain tiles, decorations and special trims) is one full box. I dati relativi agli imballi sono aggiornati al momento della stampa del catalogo e pertanto possono subire variazioni nel corso del tempo. / Data referring to packaging have been update at time of printing; the actual data may be slightly different.

Pezzi speciali e decori per effetto delle lavorazioni, possono presentare variazioni di tonalità. / Due to working process special trims and decors, may show variation in tonality.

**Le caratteristiche di superficie e le tonalità dei prodotti ceramici illustrati in questo catalogo sono da ritenersi puramente indicative.
Optical features and color shades of ceramic materials illustrated in this catalogue are to be regarded as mere indications.**

Marketing ABK Group
Direfarecreare.it
237

ABK
Brand of ABK Group Industrie Ceramiche s.p.a. - via S.Lorenzo N.24/a - 41034 Finale Emilia - Modena Italy
tel. 0535 761311 - fax 0535 761320/92800/761351

www.abk.it
#abkemozioni

WE
ARE **ABK**
GROUP

ABK
EMOZIONI IN SUPERFICIE

WE
ARE **ABK**
GROUP